

ONCE  
UPON  
A GOOD REST  
Rooms with a story

ROOM DESCRIPTION



CASA  
PALMELA  
Hôtel Arábida

SMALL  
LUXURY  
HOTELS  
OF THE WORLD

Independently minded

SERANDIPIANS  
Hotel Partner



LUXE

## OUR ROOMS

**Hotel Casa Palmela** offers two distinct atmospheres: the Manor House and the Garden House.

In the **Manor House**, one breathes the charm and romanticism of a five-star hotel, surrounded by the dazzling nature of *Serra da Arrábida* and the stories and gossip typical of a family house.

With its chapel, vaulted ceilings and original *Azulejos* panels from the XVII century, every corner a perfect place for a cup of tea and good book.

The **Garden House** is located just next to the Manor House, and it is the most ancient building in the property, when it was built for farming purposes providing agricultures, farmers and shepherds them not only a storage, as well as a ceiling for resting and for weather protection.

The spacious and cozy rooms, in the Garden House, are the ideal option for a family stay. Every room is suitable for an extra bed or cot and there is also two communicating rooms for extra space and privacy.

Every room is equipped with double glazed windows with thermal and acoustic features, air conditioning and heating system, amenities by Rituals, free wi-fi, USB socket, bathrobes, hairdryer, espresso machine and led TV.

Every room is different. Some rooms are bigger, some have a balcony or terrace. Choose yours!



## ARRÁBIDA

These rooms, No. 4, 5, 6 and 7, have areas around 20m<sup>2</sup> with a bathroom with shower, double bed (or twin) and views to *Serra de São Luis* and the main *Patio* of the house.

These rooms are all located on the ground floor of the Manor House.

- Wi-fi connection
- Wake-up call service
- Room cleaning (daily)
- Free toiletries
- Amenities by Rituals
- Hair Dryer
- In-room safe box
- Led TV
- Electronic access control
- USB wall charger
- Iron / ironing board (on request)
- Robe
- Double bed of – 2,00m\*1,80m or twin of 2,00m\*0,90m



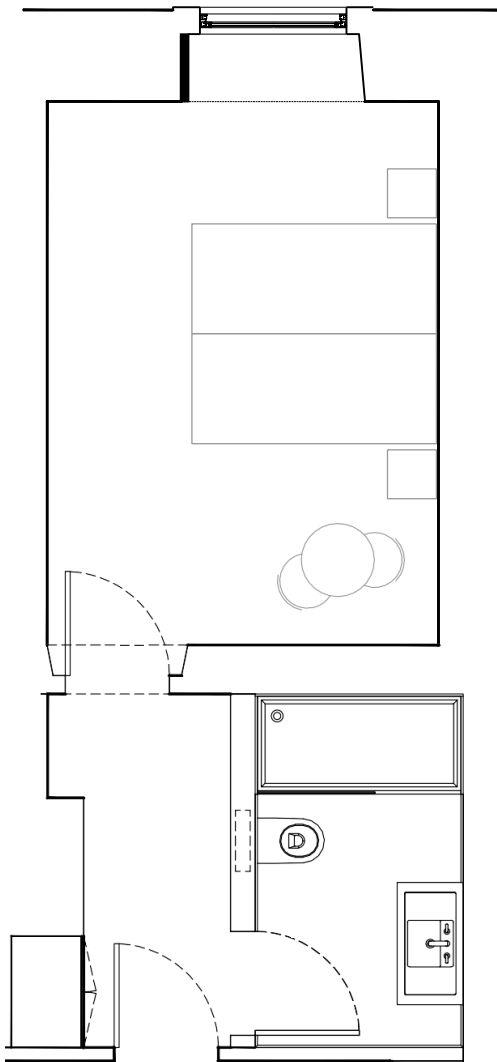
## Room 4

**Location:** Manor House

**Floor:** Ground Floor

**WC:** 4,90m<sup>2</sup>

**Room:** 19,70m<sup>2</sup>



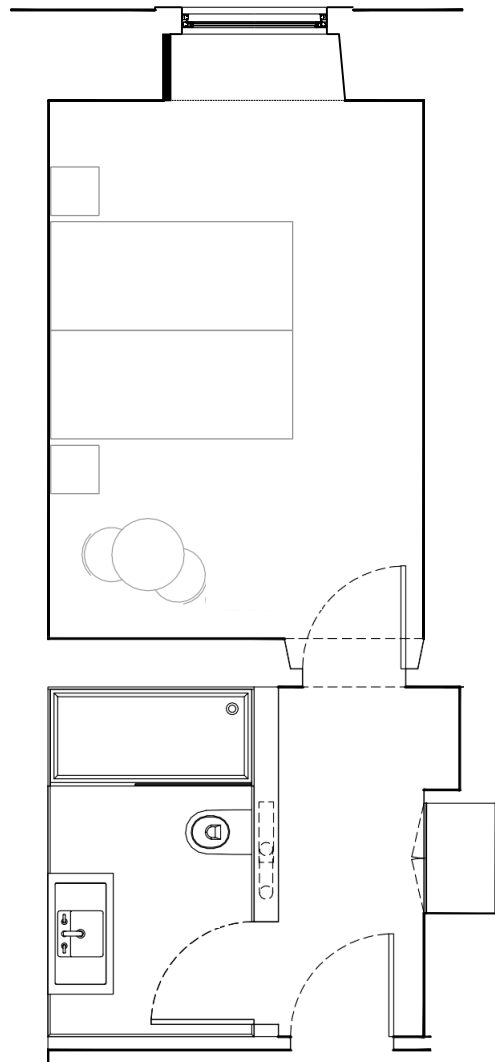
## Room 5

**Location:** Manor House

**Floor:** Ground Floor

**WC:** 4,90m<sup>2</sup>

**Room:** 19,25m<sup>2</sup>



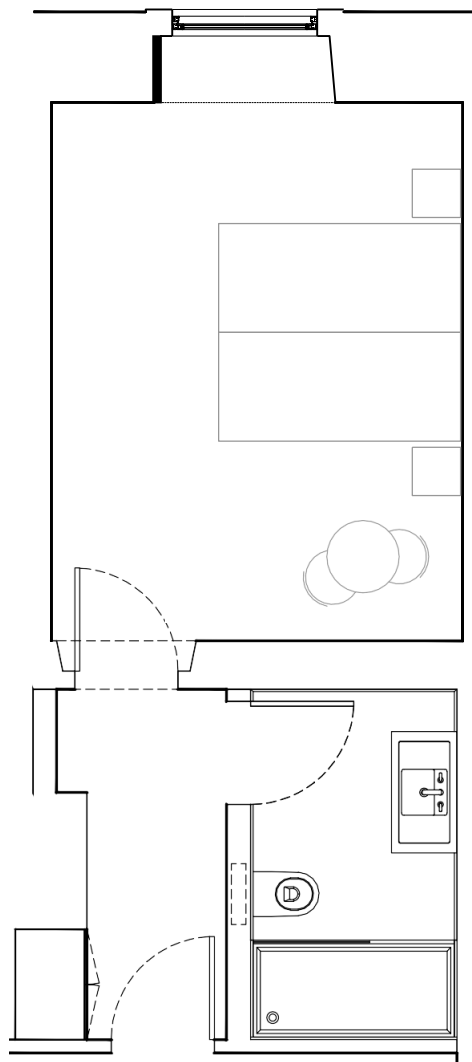
## Room 6

**Location:** Manor House

**Floor:** Ground Floor

**WC:** 4,90m<sup>2</sup>

**Room:** 20,40m<sup>2</sup>



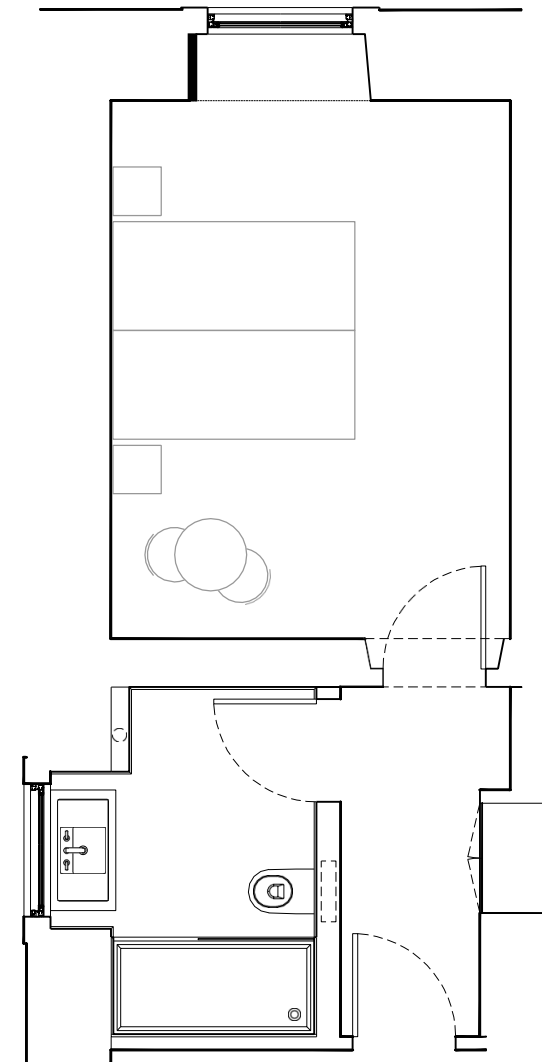
## Room 7

**Location:** Manor House

**Floor:** Ground Floor

**WC:** 5,45m<sup>2</sup>

**Room:** 20,00m<sup>2</sup>



## PREMIUM

Rooms located in the Manor House, with total areas from 26m<sup>2</sup> (including terrace/balcony). These units have a bathroom with shower and all rooms have either a private balcony or terrace, with approximately 12m<sup>2</sup>, facing the gardens of the house.

Rooms No. 1, 2 and 3 have direct access to the gardens of the house through a private terrace, while bedrooms No. 18 and 19, on the 1<sup>st</sup> floor with private balcony.

- Wi-fi connection
- Air conditioning
- Wake-up service
- Room cleaning (daily)
- Free toiletries
- Amenities by Rituals
- Hair Dryer
- In-room safe
- LED TV
- Electronic access control
- Iron / ironing board (on request)
- Robe
- Mini bar (on request)
- Balcony or Terrace
- Double bed – 2,00m\*1,80m or 2 twin of 2,00m\*0,90m (Rooms No 1 and 2)
- Double bed – 2,00m\*1,60m or 2 twin of 2,00m\*0.80m (Rooms No 3, 18 and 19)



## Room 1

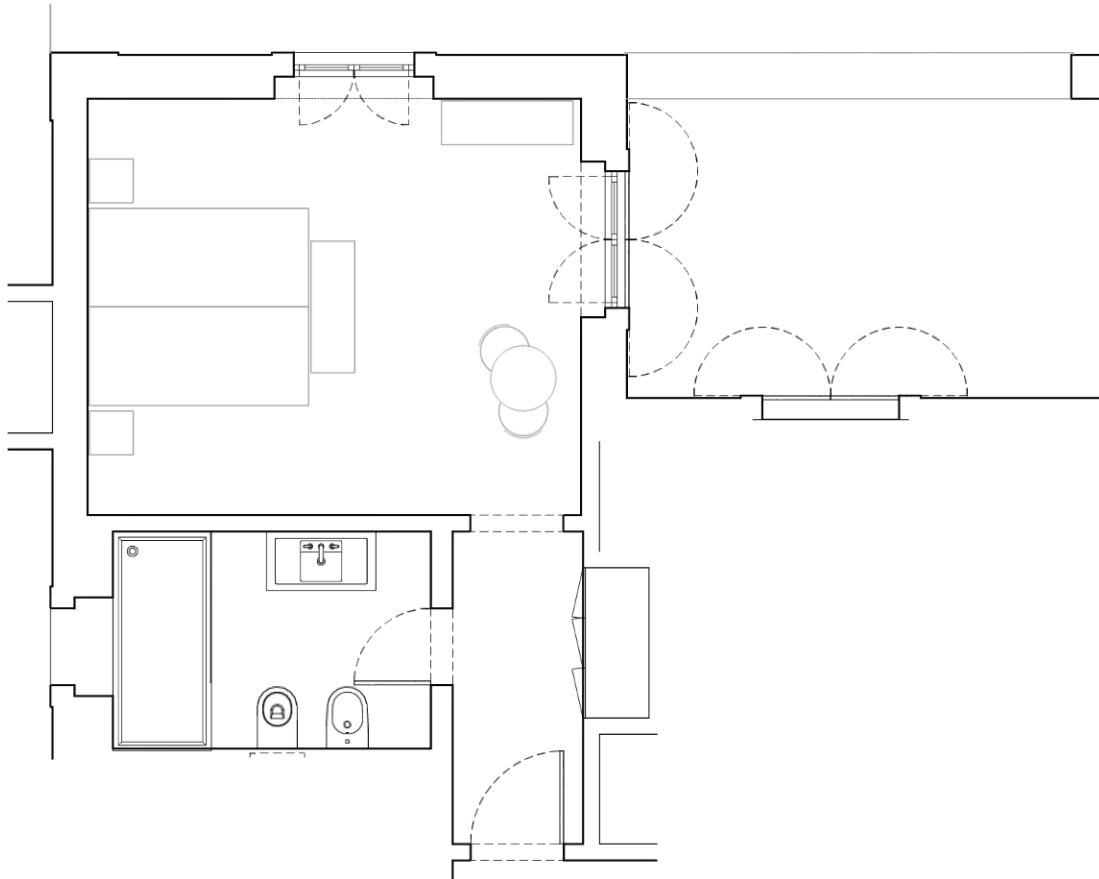
**Location:** Manor House

**Floor:** Ground Floor

**WC:** 5,75 m<sup>2</sup>

**Room:** 21,75m<sup>2</sup>

**Terrace:** 12,65m<sup>2</sup>



## Room 2

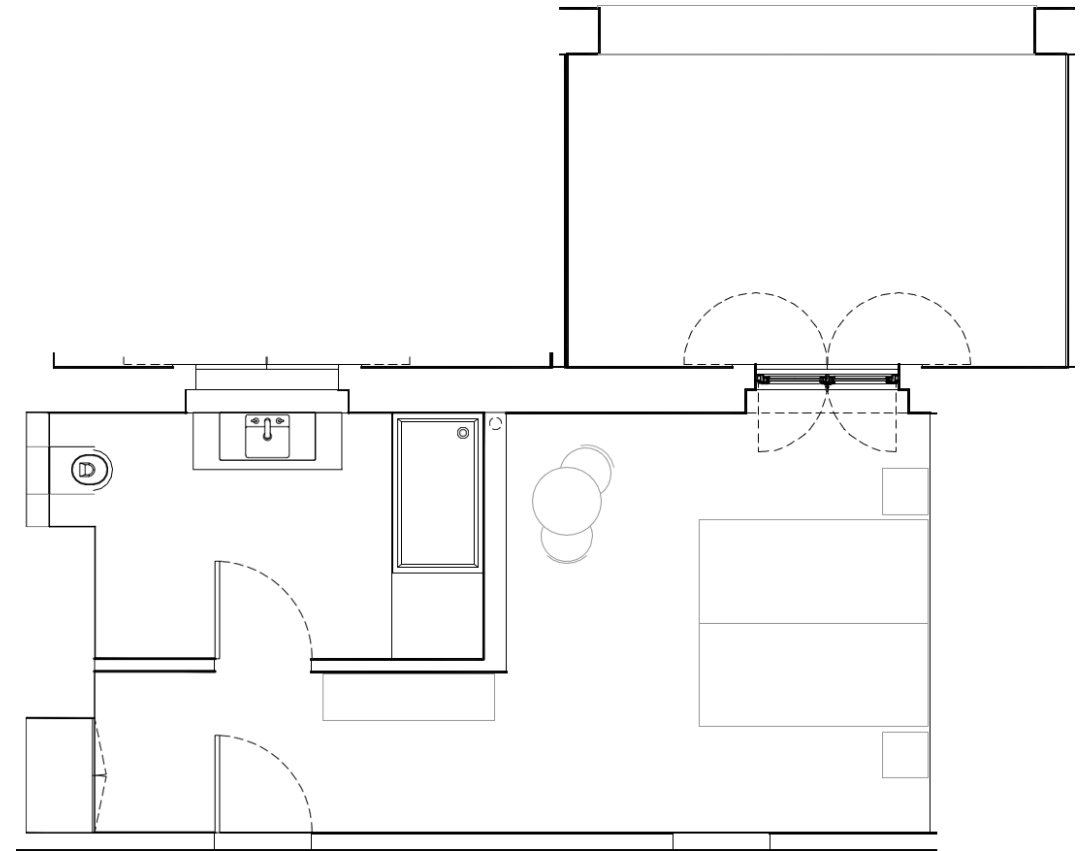
**Location:** Manor House

**Floor:** Ground Floor

**WC:** 7,70 m<sup>2</sup>

**Room:** 19,50m<sup>2</sup>

**Terrace:** 12,65m<sup>2</sup>



## Room 3

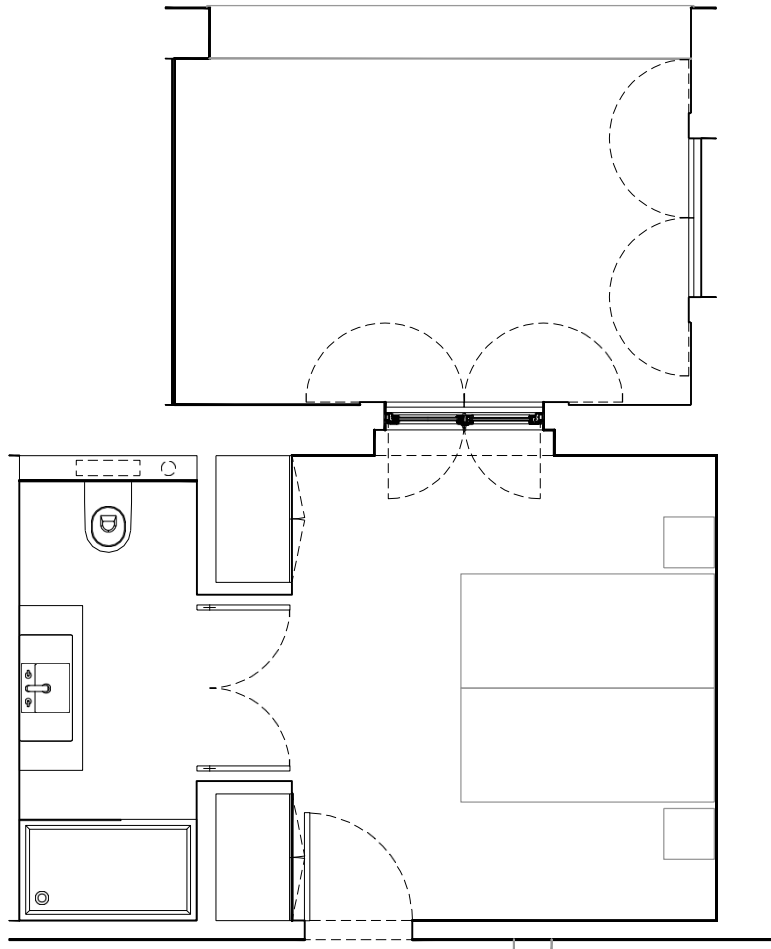
**Location:** Manor House

**Floor:** Ground Floor

**WC:** 6,00m<sup>2</sup>

**Room:** 13,80m<sup>2</sup>

**Terrace:** 11,90m<sup>2</sup>



## Room 18

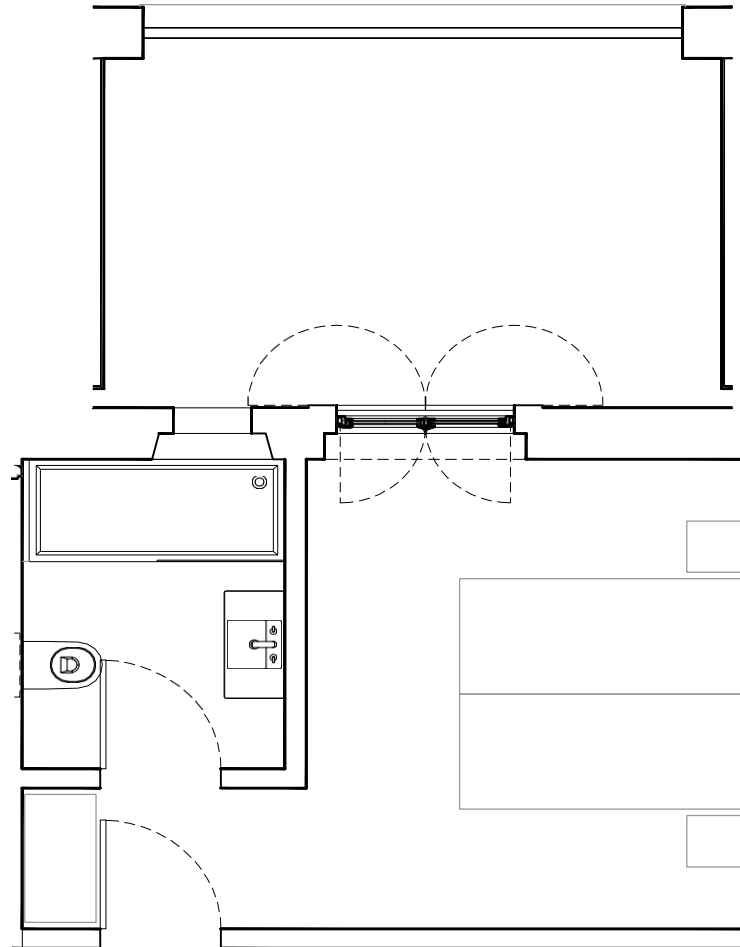
**Location:** Manor House

**Floor:** First Floor

**WC:** 4,50m<sup>2</sup>

**Room:** 13,90m<sup>2</sup>

**Balcony:** 12,65m<sup>2</sup>



## Room 19

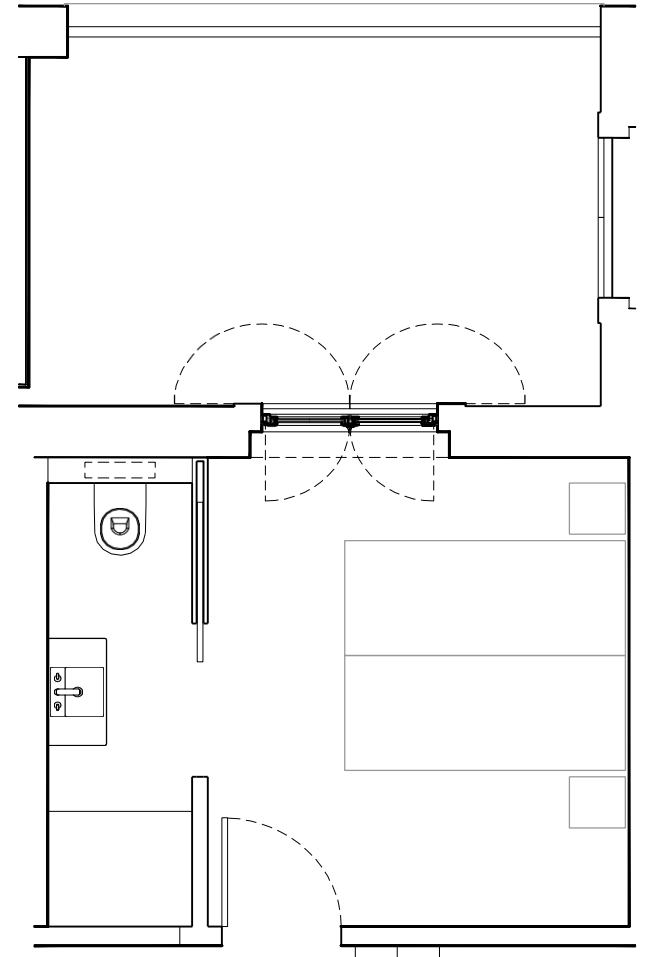
**Location:** Manor House

**Floor:** First Floor

**WC:** 3,60m<sup>2</sup>

**Room:** 11,30m<sup>2</sup>

**Balcony:** 11,90m<sup>2</sup>



## JUNIOR SUITE

3 Junior Suites, rooms No. 20, 21 and 22 are located in the Manor House, in the former Ballroom and Library of the house with total areas larger than 30m<sup>2</sup>, offering guests all the comfort and space they need for a pleasant stay.

- Wi-fi connection
- Air conditioning
- Wake-up service
- Room cleaning (daily)
- Free toiletries
- Amenities by Rituals
- Hair Dryer
- In-room safe
- LED TV
- Electronic access control
- Iron / ironing board (on request)
- Robe
- Mini bar (on request)
- Queen size bed – 2,00m\*1,90m (Room No 20)
- Double bed – 2,00m\*1,80m or 2 twin of 0,90m (Rooms No 21 and 22)





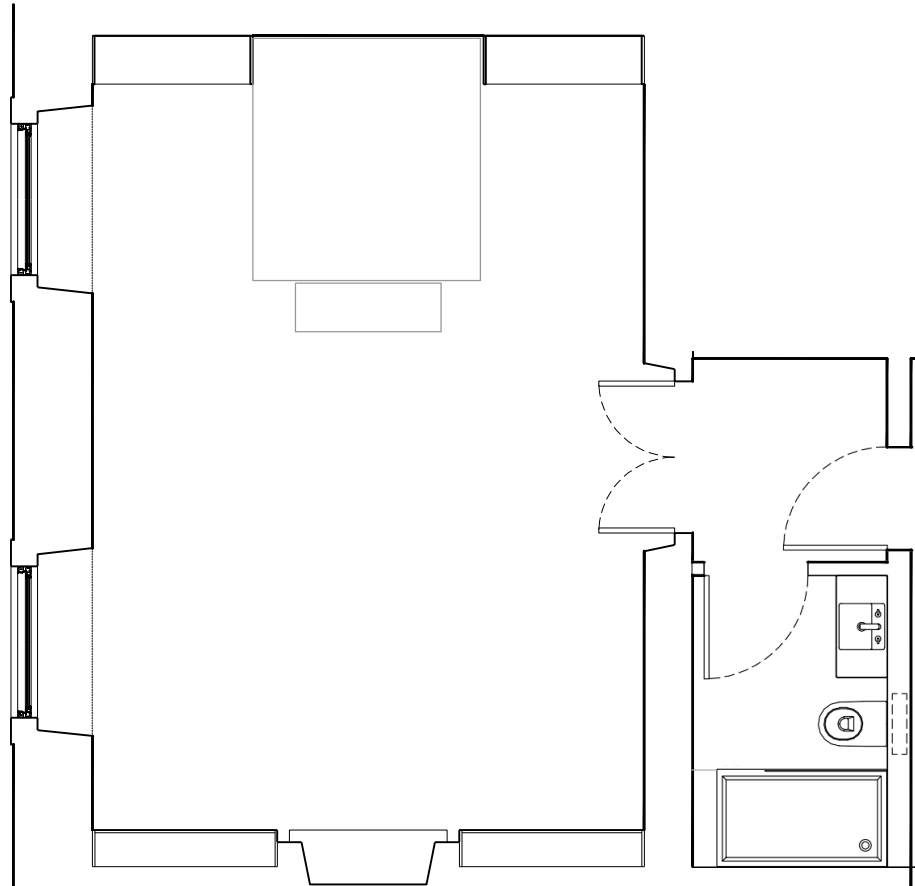
## Room 20

**Location:** Manor House

**Floor:** First Floor

**WC:** 3,80m<sup>2</sup>

**Room:** 35,70m<sup>2</sup>



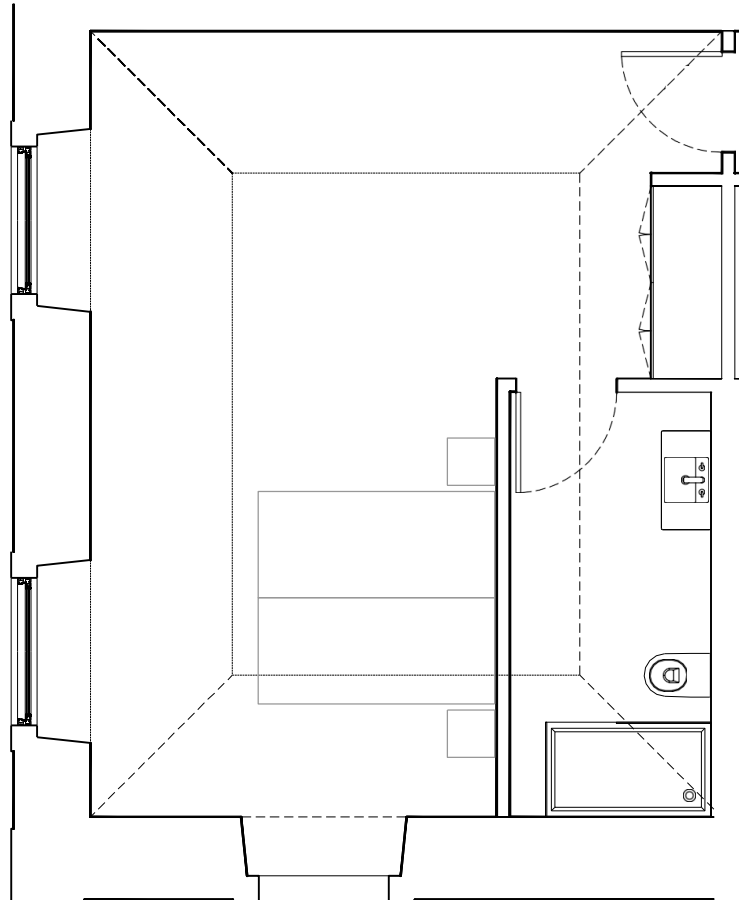
## Room 21

**Location:** Manor House

**Floor:** First Floor

**WC:** 5,70m<sup>2</sup>

**Room:** 30,30m<sup>2</sup>



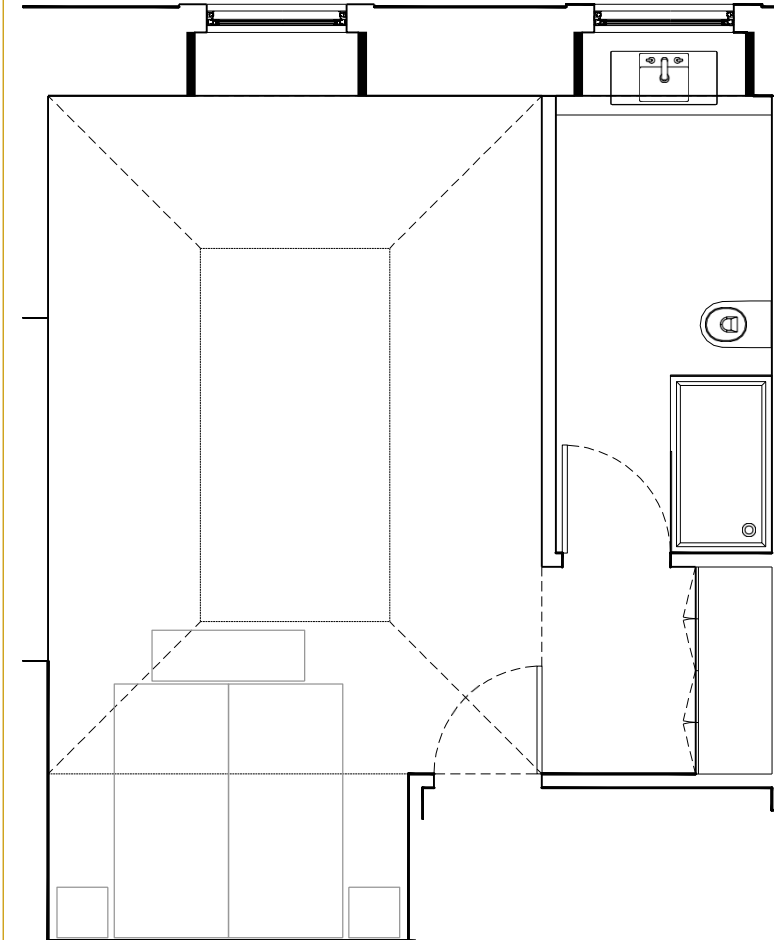
## Room 22

**Location:** Manor House

**Floor:** First Floor

**WC:** 6,80m<sup>2</sup>

**Room:** 28,10m<sup>2</sup>



## JUNIOR SUITE ROMANCE

The former charm room of the house, is Room No 23. Located in the main building, now gives way to a spacious room with almost 50 m<sup>2</sup>

Crafted ceilings, solid wood floors and a black marble fireplace, give this room the touch of charm and elegance that, combined with its dimension, also surprises by its aesthetics.

- Wi-fi connection
- Air conditioning
- Wake-up service
- Room cleaning (daily)
- Free toiletries
- Amenities by Rituals
- Hair Dryer
- In-room safe
- LED TV
- Electronic access control
- Iron / ironing board (on request)
- Robe
- Mini bar (on request)
- In room bathtub
- Sofa bed
- Queen size bed – 2,00m\*1,90m



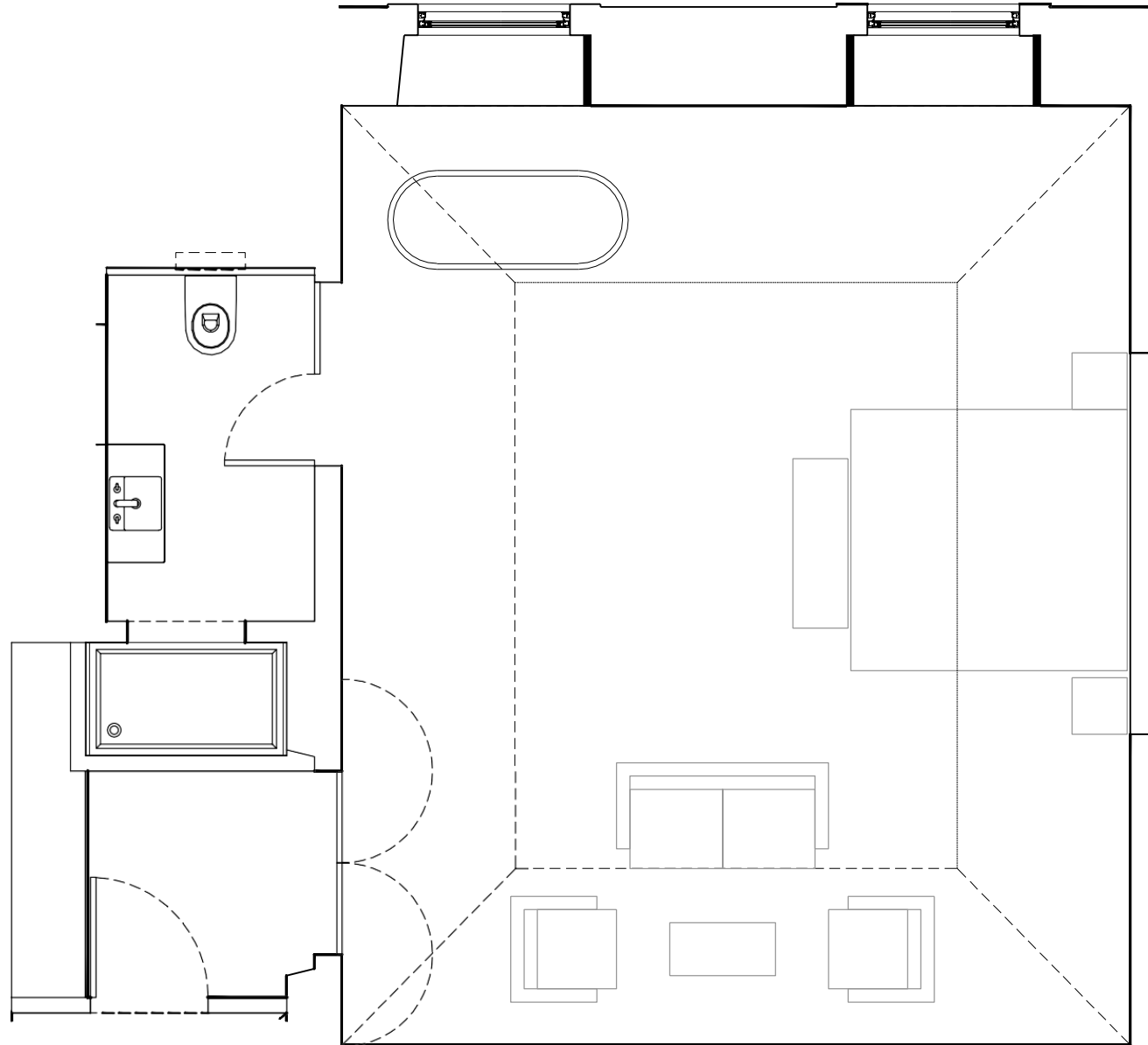
## Room 23

Location: Manor House

Floor: First Floor

WC: 5,00m<sup>2</sup>

Room: 43,00m<sup>2</sup>



## MASTER SUITE

The most emblematic and spacious room of Hotel Casa Palmela, Room No 16, has a living room and a balcony. This room was the room of the owners of the house and it is now the most valued room in the Hotel.

Internal social area, balcony with views over the Gardens and Serra da Arrábida.

- Wi-fi connection
- Living room area
- Balcony
- Air conditioning
- Wake-up service
- Room cleaning (daily)
- Free toiletries
- Amenities by Rituals
- Hair Dryer
- In-room safe
- LED TV
- Electronic access control
- Iron / ironing board (on request)
- Robe
- Mini bar (on request)
- Bathroom with shower and bathtub
- Queen size Dossel bed – 2,00m\*1,90m



## Room 16

**Location:** Manor House

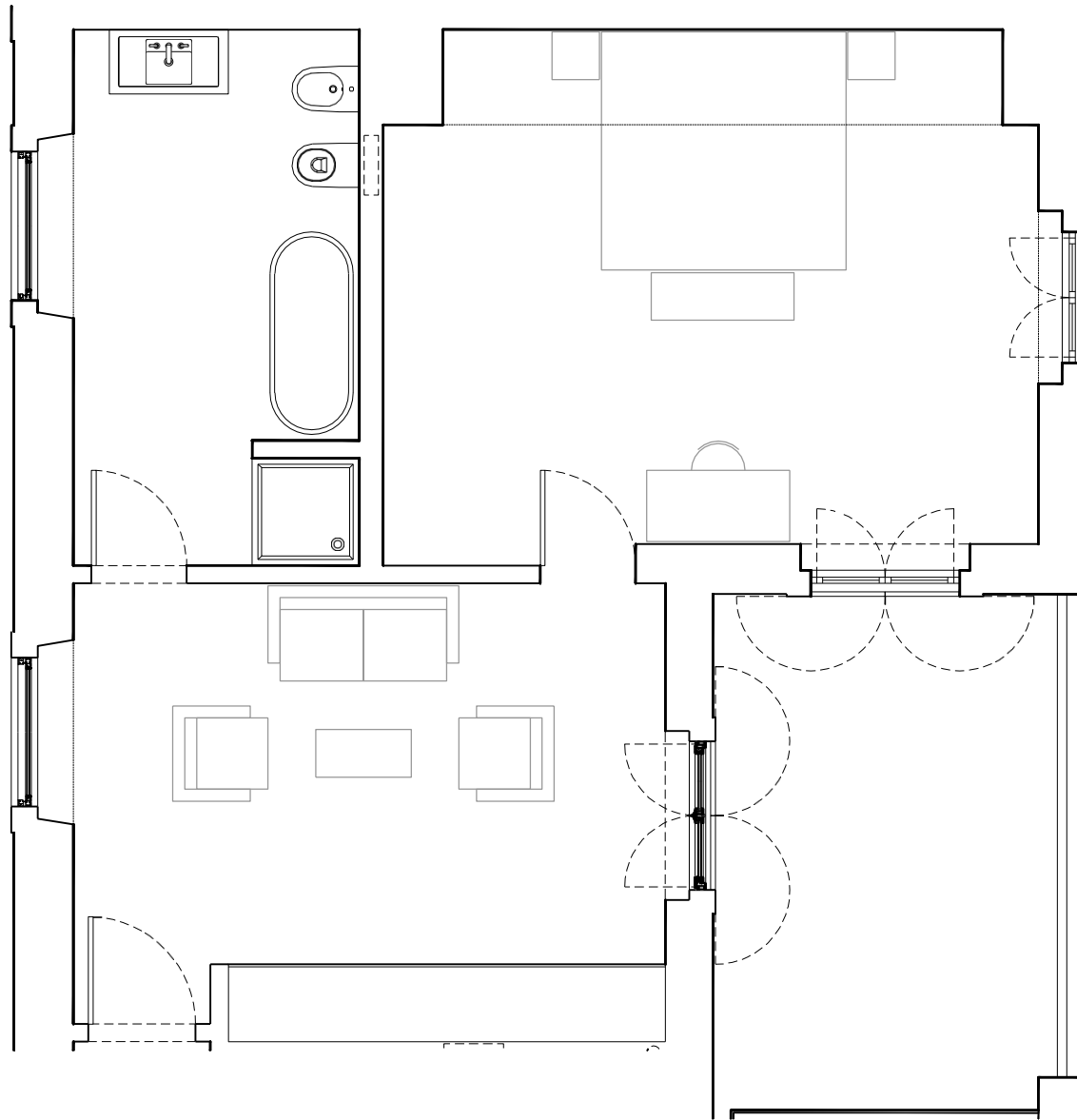
**Floor:** First Floor

**WC:** 11,25m<sup>2</sup>

**Room:** 24,30m<sup>2</sup>

**Hall:** 18,90m<sup>2</sup>

**Balcony:** 12,65m<sup>2</sup>



## SUPERIOR

With areas greater than 30 m<sup>2</sup>, 4 bedrooms, located on the ground floor, have a private balcony with more than 20 m<sup>2</sup> and a bathroom with shower, 2 other rooms located on the 1st floor, with identical areas, are characterized by the huge mansard with view over the gardens, orchard, vineyard and *Serra da Arrábida*.

- Air conditioning
- Wi-fi connection
- Wake-up service
- Room cleaning (daily)
- Free toiletries
- Amenities by Rituals
- Hair Dryer
- In-room safe
- LED TV
- Electronic access control
- Iron / ironing board (on request)
- Robe
- Mini bar (on request)
- Terrace
- Communicating Rooms (No 14 and No 15)
- Double bed – 2,00m\*1,80m or 2 twin of 2,00m\*0,90m



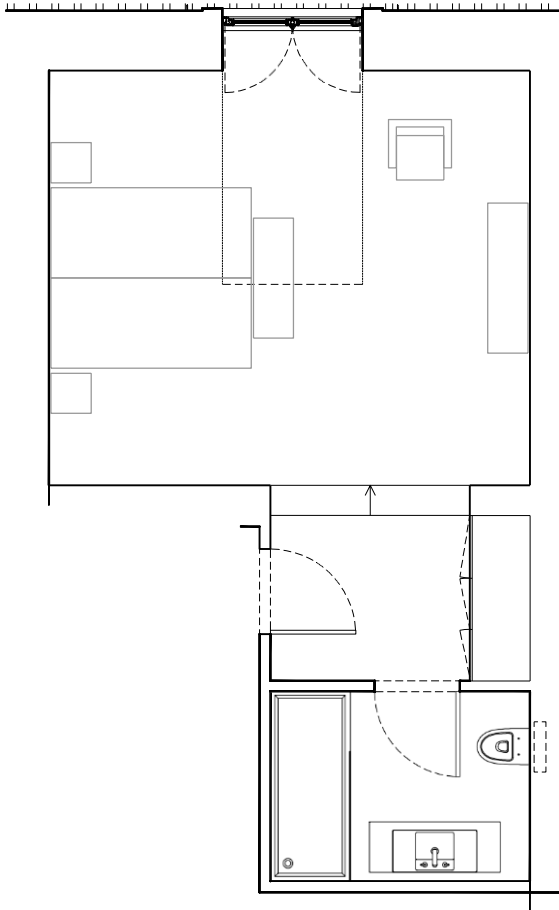
## Room 8

**Location:** Garden House

**Floor:** Ground Floor

**WC:** 4,90m<sup>2</sup>

**Room:** 25,60m<sup>2</sup>



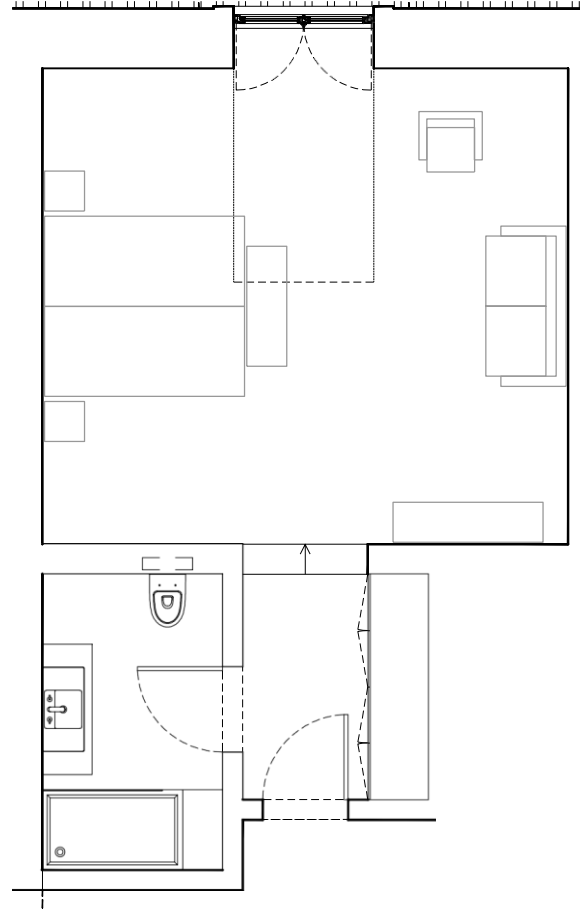
## Room 9

**Location:** Garden House

**Floor:** Ground Floor

**WC:** 5,30m<sup>2</sup>

**Room:** 29,50m<sup>2</sup>



## Room 11

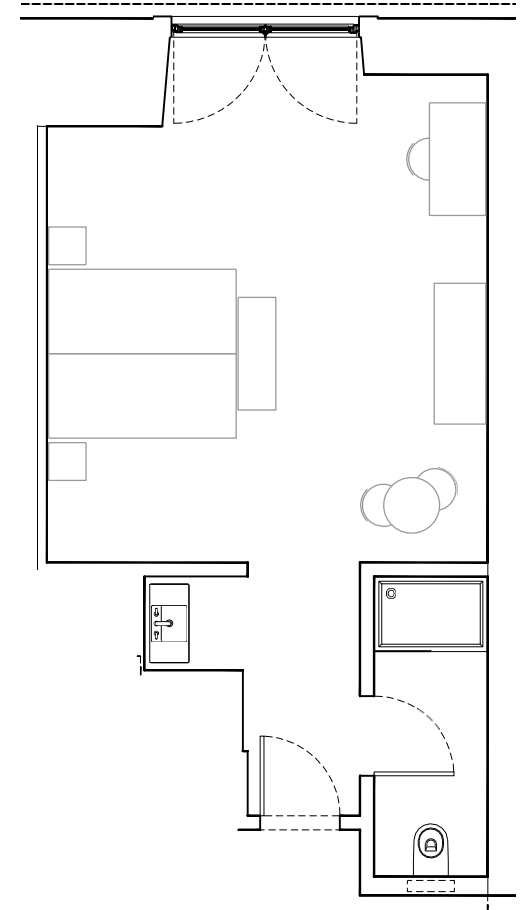
**Location:** Garden House

**Floor:** -1 Floor

**WC:** 4,00m<sup>2</sup>

**Room:** 28,95m<sup>2</sup>

**Terrace:** 17,90m<sup>2</sup>



## Room 12

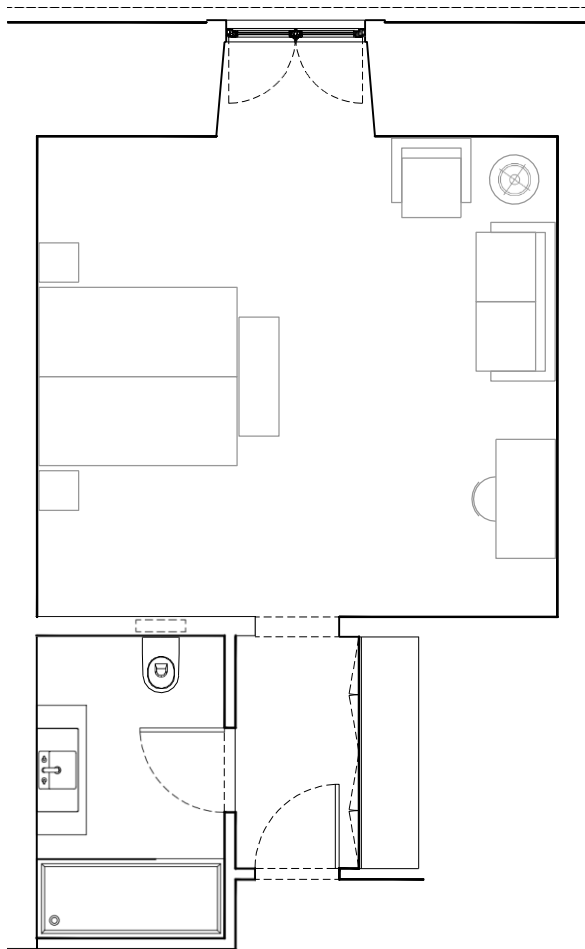
Location: Garden House

Floor: -1 Floor

WC: 5,30m<sup>2</sup>

Room: 29,80m<sup>2</sup>

Terrace: 17,00m<sup>2</sup>



## Room 14 (Connecting w/ #15)

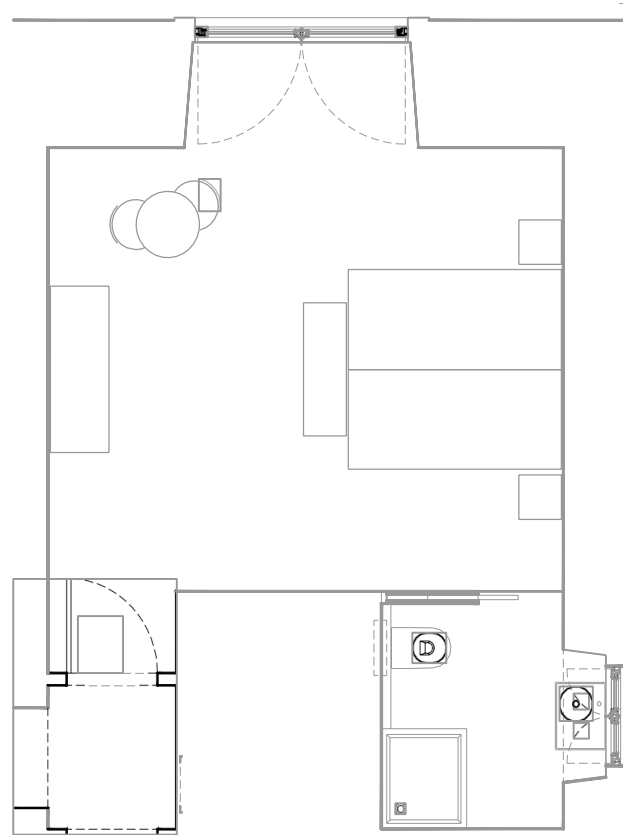
Location: Garden House

Floor: -1 Floor

WC: 5,50m<sup>2</sup>

Room: 22,80m<sup>2</sup>

Terrace: 17,65m<sup>2</sup>



## Room 15 (Connecting w/ #14)

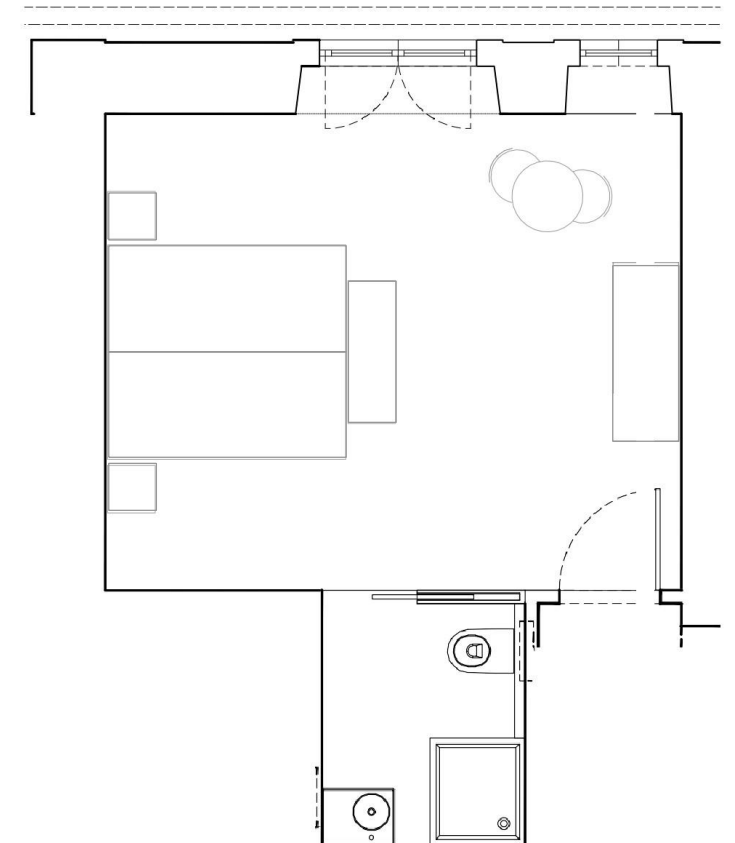
Location: Garden House

Floor: -1 Floor

WC: 5,50m<sup>2</sup>

Room: 20,80m<sup>2</sup>

Terrace: 14,00m<sup>2</sup>





## JUNIOR SUITE GARDEN HOUSE

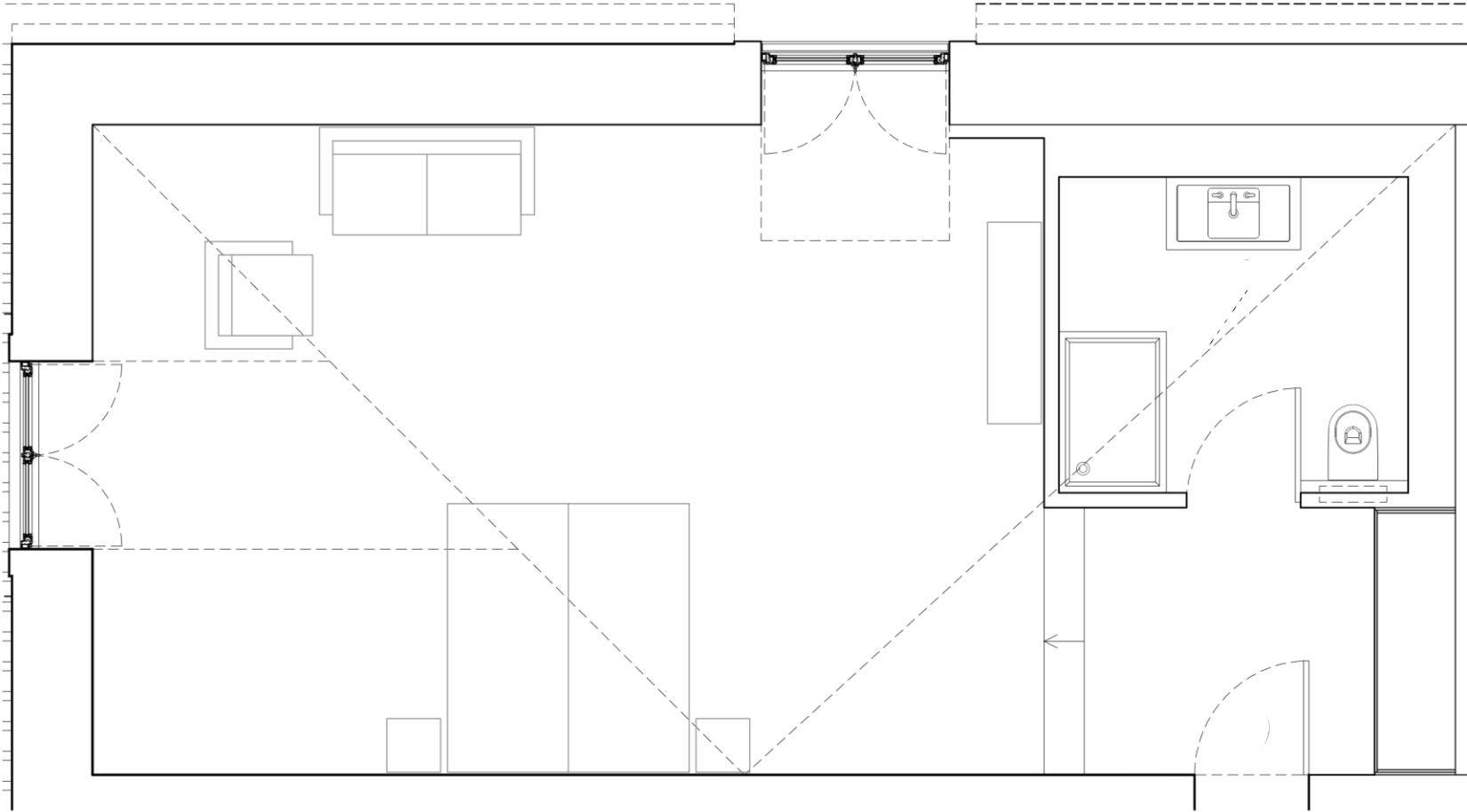
This large room, with almost 50 m2, has a privileged view over the Vineyard and Serra da Arrábida. With modern architecture, this room is a best seller of the Hotel.

- Air conditioning
- Wi-fi connection
- Wake-up service
- Room cleaning (daily)
- Free toiletries
- Amenities by Rituals
- Hair Dryer
- In-room safe
- LED TV
- Electronic access control
- Iron / ironing board (on request)
- Robe
- Mini bar (on request)
- Double bed – 2,00m\*1,80m or 2 twin of 2,00m\*0,90m



# Room 10

Location: Garden House  
Floor: Ground Floor  
WC: 6,10m<sup>2</sup>  
Room: 42,80m<sup>2</sup>



Building	Room Nº	Room Type	Extra Bed/Cot	Room area	WC Area	Other Areas	Sub-total internal areas	Area Balcony / Terrace	Area Total	WC c/ Bathtub	View	Bed	Coffee machine	Safe deposit	Hair drier	Mini-Bar	Floor	Comments
Manor House	1	Premium	Cot	21,75	5,75		27,50	12,65	40,15	no	Garden	Double Bed 1,80, Optional 2 twins de 0,90	yes	yes	yes	on request	0	Terrace w/ access to the gardens
Manor House	2	Premium	Cot	19,5	7,7		27,20	12,65	39,85	no	Garden	Double Bed 1,80, Optional 2 twins de 0,90	yes	yes	yes	on request	0	Terrace w/ access to the gardens
Manor House	3	Premium	no	13,8	6		19,80	11,90	31,70	no	Garden	Double Bed 1,60, Optional 2 twins de 80	no	yes	yes	no	0	Terrace w/ access to the gardens
Manor House	4	Arrábida	no	19,7	4,9		24,60		24,60	no	Main Entrance Pateo	Double Bed 1,80, Optional 2 twins de 0,90	no	yes	yes	no	0	
Manor House	5	Arrábida	no	19,25	4,9		24,15		24,15	no	Main Entrance Pateo	Double Bed 1,80, Optional 2 twins de 0,90	no	yes	yes	no	0	
Manor House	6	Arrábida	no	20,4	4,9		25,30		25,30	no	Main Entrance Pateo	Double Bed 1,80, Optional 2 twins de 0,90	no	yes	yes	no	0	
Manor House	7	Arrábida	no	20	5,45		25,45		25,45	no	Main Entrance Pateo	Double Bed 1,80, Optional 2 twins de 0,90	no	yes	yes	no	0	
Garden House	8	Superior Dormer	Cot or Extra Bed	25,3	4,9		30,20		30,20	no	Swimming Pool / Arrábida Mountain	Double Bed 1,80, Optional 2 twins de 0,90	yes	yes	yes	on request	0	Dormer windows
Garden House	9	Superior Dormer	Cot or Extra Bed	28,8	5,3		34,10		34,10	no	Swimming Pool / Arrábida Mountain	Double Bed 1,80, Optional 2 twins de 0,90	yes	yes	yes	on request	0	Dormer windows
Garden House	10	Junior Suite Dormer	Cot or Extra Bed	40,2	6,1		46,30		46,30	no	Swimming Pool / Arrábida Mountain	Double Bed 1,80, Optional 2 twins de 0,90	yes	yes	yes	on request	0	Dormer windows
Garden House	11	Superior w/ Terrace	Cot or Extra Bed	28,9	4		32,90	17,90	54,90	no	Swimming Pool / Arrábida Mountain	Double Bed 1,80, Optional 2 twins de 0,90	yes	yes	yes	on request	-1	Terrace
Garden House	12	Superior w/ Terrace	Cot or Extra Bed	31,4	5,8		37,20	17,00	56,20	no	Swimming Pool / Arrábida Mountain	Double Bed 1,80, Optional 2 twins de 0,90	yes	yes	yes	on request	-1	Terrace
Garden House	14	Superior w/ Terrace	Cot or Extra Bed	22,3	4		26,30	17,65	46,30	no	Swimming Pool / Arrábida Mountain	Double Bed 1,60, Optional 2 twins de 80	yes	yes	yes	on request	-1	Communicating
Garden House	15	Superior w/ Terrace	Cot or Extra Bed	20	3,5		23,50	14,00	23,50	no	Swimming Pool / Arrábida Mountain	Double Bed 1,60, Optional 2 twins de 80	yes	yes	yes	on request	-1	Communicating
Manor House	16	Master Suite	Cot and Extra Bed	24,3	11,25	18,9	54,45	12,65	67,10	yes	Arrabida Mountain/Garden	Cama Dossel 1,60	yes	yes	yes	on request	1	Room w/ balcony
Manor House	18	Premium	no	13,9	4,5		18,40	12,65	31,05	no	Arrabida Mountain/Garden	Double Bed 1,60, Optional 2 twins de 80	yes	yes	yes	no	1	Room w/ balcony
Manor House	19	Premium	no	11,3	3,6		14,90	11,90	26,80	no	Arrabida Mountain/Garden	Double Bed 1,60, Optional 2 twins de 80	no	yes	yes	no	1	Room w/ balcony
Manor House	20	Jr. Suite	no	35,7	3,8		39,50		39,50	no	Main Pateo/Vinyards/São Luís Hills	Double Bed 1,0,90	yes	yes	yes	on request	1	Former Library
Manor House	21	Jr. Suite	no	30,3			30,30		30,30	no	Main Pateo/Vinyards/São Luís Hills	Double Bed 1,80, Optional 2 twins de 0,90	yes	yes	yes	on request	1	
Manor House	22	Jr. Suite	no	28,1	6,8		34,90		34,90	no	Main Pateo/Vinyards/São Luís Hills	Double Bed 1,80, Optional 2 twins de 0,90	yes	yes	yes	on request	1	
Manor House	23	Jr. Suite Romance	Extra Bed (Sofa Bed)	43	5		48,00		48,00	yes	Vinyards/São Luís Hills/Garden	Double Bed 1,0,90	yes	yes	yes	on request	1	Bathtub inside room

ONCE  
UPON  
A GOOD REST  
Rooms with a story

SMALL  
LUXURY  
HOTELS  
OF THE WORLD

*Independently minded*

SERANDIPIANS  
Hotel Partner



LUXE

Quinta do Esteval - E.N. nº 10 – Km 33,5 | 2900-722 Setúbal | Portugal  
38°31'21.1"N 8°56'42.1"W  
T.: +351 265 249 650 | M.: +351 969 298 381  
VAT Nº 513.460.160  
[www.hotelcasapalmela.pt](http://www.hotelcasapalmela.pt)